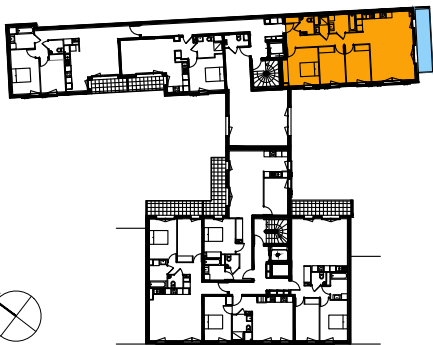
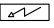

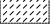
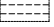


Construction de 31 logements
et un bureau

10 rue Curton -
61 boulevard Victor Hugo
Clichy (92110)



Pièce	Surface habitable	
Entrée	4.4	m²
Séjour / Cuisine	33.5	m²
Chambre 1	13.3	m²
Chambre 2	9.9	m²
Chambre 3	9.5	m²
Dégagement	7.7	m²
Salle de bain	5.1	m²
Salle d'eau	2.0	m²
WC	2.4	m²
Surface habitable	87.8	m²
Surface annexe		
Balcon	9.3	m²
Surfaces annexes totales	9.3	m²

 Tableau électrique	PF: Porte-fenêtre
 Gaine technique	F: Fenêtre
 Faux plafond	VR: Volet roulant
 Retombée de poutre	VC: Volet coulissant

Appartement :	B14
Niveau :	R+1
Type :	4P